

Monthly Reporting

Report from 01 January 2015 to 31 March 2015

Report for Resource Pool XC on ARCHER

A total of 3,824,020.79 kAU were available during this period.

Use and Allocations (by Project)

In the following table, Charged refers to usage which was charged against the project Allocation; whereas Used refers to usage including uncharged time. Uncharged time can arise from use of the Low Priority queue and/or during times when charging is disabled on the service.

The (Allocation) column is the time allocated to the project, scaled according to the reporting period and shown as a fraction of the available resources. If this report period is a sub-period of the Allocation period then the SAFE calculates the Allocation for this sub-period based on a linear spend profile of the total Allocation. If the usage for a project is not linear across the full Allocation period the the Use can be larger than the extrapolated Allocation.

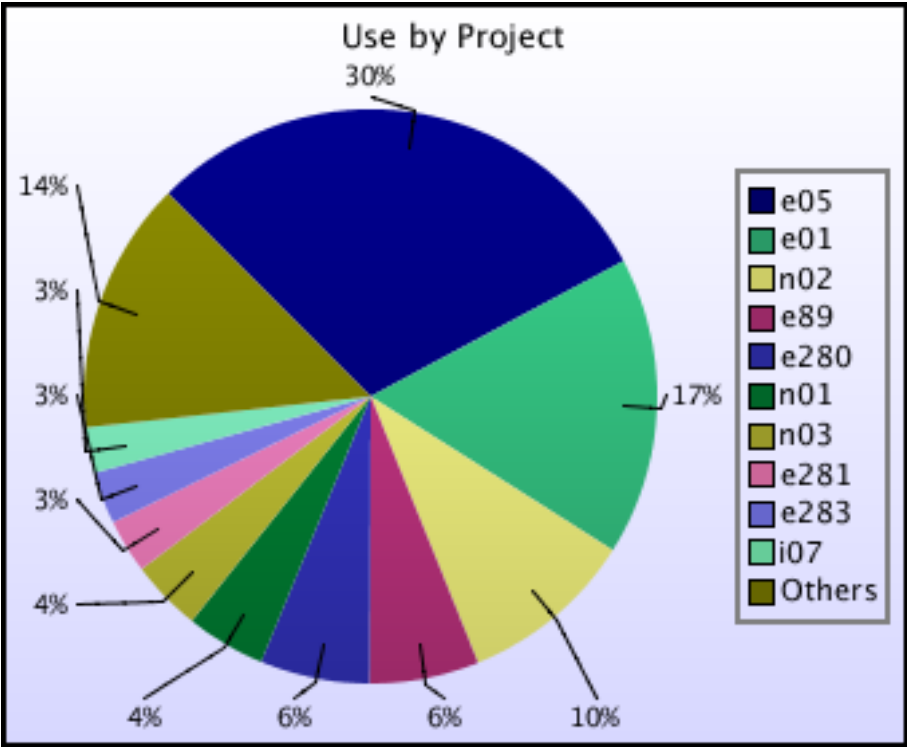
Project	Project Class	Number of Jobs	Charged kAUs	Charged Utilisation	Used kAUs	Utilisation	Allocated kAUs	Allocation
e01	Consortia	4,764	486,213.3	12.71%	542,971.5	14.20%	160,190.2	4.19%
e05	Consortia	38,282	932,917.9	24.40%	958,939.5	25.08%	481,210.6	12.58%
e89	Consortia	15,971	199,554.5	5.22%	199,588.2	5.22%	307,866.4	8.05%
e280	Consortia	31,947	197,479.8	5.16%	199,558.1	5.22%	117,625.2	3.08%
e281	Consortia	1,631	97,450.9	2.55%	98,048.5	2.56%	54,623.4	1.43%
e283	Consortia	2,009	94,538.9	2.47%	94,555.4	2.47%	44,236.4	1.16%
e305	Consortia	2,359	74,068.2	1.94%	74,085.6	1.94%	50,397.4	1.32%
c01	Class1a	719	3,464.5	0.09%	3,464.5	0.09%	5,156.4	0.13%
e10	Class1a	136	150.3	0.00%	182.2	0.00%	22,848.6	0.60%
e71	Class1a	178	2,330.8	0.06%	2,330.8	0.06%	7,464.0	0.20%
e110	Class1a	11	2,368.6	0.06%	2,368.6	0.06%	12,790.3	0.33%
e125	Class1a	559	5,067.8	0.13%	5,325.8	0.14%	8,544.2	0.22%
e155	Class1a	0	0.0	0.00%	0.0	0.00%	759.5	0.02%
e174	Class1a	1,117	2,137.6	0.06%	2,137.9	0.06%	10,372.4	0.27%
e175	Class1a	212	6,294.7	0.16%	11,394.6	0.30%	5,210.9	0.14%
e179	Class1a	125	4,565.9	0.12%	4,565.9	0.12%	10,426.6	0.27%
e182	Class1a	0	0.0	0.00%	0.0	0.00%	1,035.2	0.03%
e184	Class1a	718	13,256.5	0.35%	13,257.3	0.35%	12,157.6	0.32%
e191	Class1a	199	2,441.7	0.06%	2,441.7	0.06%	5,412.8	0.14%
e202	Class1a	237	62,732.6	1.64%	62,732.6	1.64%	28,473.1	0.74%
e220	Class1a	298	443.3	0.01%	443.3	0.01%	1,195.1	0.03%
e228	Class1a	97	2,885.9	0.08%	2,885.9	0.08%	1,433.9	0.04%
e229	Class1a	6	5.7	0.00%	5.7	0.00%	1,345.3	0.04%
e266	Class1a	352	6,862.6	0.18%	16,999.1	0.44%	20,733.9	0.54%
e268	Class1a	0	0.0	0.00%	0.0	0.00%	1,377.7	0.04%
e272	Class1a	1,008	4,675.1	0.12%	4,675.1	0.12%	9,646.4	0.25%
e282	Class1a	195	2,484.6	0.06%	2,484.6	0.06%	2,202.1	0.06%
e290	Class1a	312	36.0	0.00%	36.4	0.00%	329.4	0.01%
e291	Class1a	1	14.5	0.00%	14.5	0.00%	2,232.7	0.06%
e300	Class1a	16	67.6	0.00%	67.6	0.00%	2,207.1	0.06%
e301	Class1a	257	3,776.8	0.10%	3,776.8	0.10%	5,932.4	0.16%
e304	Class1a	63	294.9	0.01%	294.9	0.01%	20,949.2	0.55%
e320	Class1a	0	0.0	0.00%	0.0	0.00%	6,654.5	0.17%
e330	Class1a	0	0.0	0.00%	0.0	0.00%	501.1	0.01%
e331	Class1a	95	360.6	0.01%	360.6	0.01%	4,097.8	0.11%
e332	Class1a	0	0.0	0.00%	0.0	0.00%	1,951.0	0.05%
e333	Class1a	364	8,147.7	0.21%	8,147.7	0.21%	13,021.8	0.34%
e336	Class1a	0	0.0	0.00%	0.0	0.00%	522.5	0.01%
e342	Class1a	26	2,467.0	0.06%	2,467.0	0.06%	1,537.6	0.04%
e343	Class1a	324	8,952.6	0.23%	8,952.8	0.23%	4,379.6	0.11%
e358	Class1a	1	0.0	0.00%	0.0	0.00%	2,173.0	0.06%
e364	Class1a	15	3.4	0.00%	3.4	0.00%	2,318.1	0.06%
e365	Class1a	0	0.0	0.00%	0.0	0.00%	4,146.7	0.11%
e375	Class1a	0	0.0	0.00%	0.0	0.00%	8,502.9	0.22%

Project	Project Class	Number of Jobs	Charged kAUs	Charged Utilisation	Used kAUs	Utilisation	Allocated kAUs	Allocation
e377	Class1a	19	1.0	0.00%	1.0	0.00%	5,300.4	0.14%
e385	Class1a	107	1,025.1	0.03%	1,025.1	0.03%	40,400.3	1.06%
e403	Class1a	0	0.0	0.00%	0.0	0.00%	0.0	0.00%
e309	Direct Access: ARCHER RAP	155	4,002.0	0.10%	4,002.0	0.10%	1,226.6	0.03%
e310	Direct Access: ARCHER RAP	0	0.0	0.00%	0.0	0.00%	3,988.8	0.10%
e312	Direct Access: ARCHER RAP	3,155	12,401.5	0.32%	12,401.6	0.32%	2,287.6	0.06%
e313	Direct Access: ARCHER RAP	54	4,482.2	0.12%	4,482.2	0.12%	3,447.3	0.09%
e314	Direct Access: ARCHER RAP	29	10,004.7	0.26%	10,004.7	0.26%	3,028.7	0.08%
e316	Direct Access: ARCHER RAP	0	0.0	0.00%	0.0	0.00%	1,612.2	0.04%
e317	Direct Access: ARCHER RAP	231	11,730.2	0.31%	11,730.5	0.31%	10,362.7	0.27%
e318	Direct Access: ARCHER RAP	0	0.0	0.00%	0.0	0.00%	4,571.9	0.12%
e319	Direct Access: ARCHER RAP	0	0.0	0.00%	0.0	0.00%	867.9	0.02%
e321	Direct Access: ARCHER RAP	3	2.5	0.00%	2.5	0.00%	4,313.2	0.11%
e323	Direct Access: ARCHER RAP	57	7,340.7	0.19%	7,340.9	0.19%	2,444.1	0.06%
e326	Direct Access: ARCHER RAP	0	0.0	0.00%	0.0	0.00%	2,524.9	0.07%
e338	Direct Access: ARCHER RAP	28	499.3	0.01%	499.3	0.01%	16,201.4	0.42%
e339	Direct Access: ARCHER RAP	73	9,981.5	0.26%	9,981.5	0.26%	14,828.3	0.39%
e346	Direct Access: ARCHER RAP	0	0.0	0.00%	0.0	0.00%	2,995.5	0.08%
e347	Direct Access: ARCHER RAP	135	398.8	0.01%	398.8	0.01%	2,112.2	0.06%
e348	Direct Access: ARCHER RAP	415	4,588.7	0.12%	4,588.7	0.12%	11,352.7	0.30%
e351	Direct Access: ARCHER RAP	99	2,538.0	0.07%	2,538.0	0.07%	1,636.3	0.04%
e352	Direct Access: ARCHER RAP	286	4,077.1	0.11%	4,077.1	0.11%	4,452.7	0.12%
e354	Direct Access: ARCHER RAP	0	0.0	0.00%	0.0	0.00%	2,977.7	0.08%
e355	Direct Access: ARCHER RAP	95	2,753.8	0.07%	2,782.9	0.07%	7,182.3	0.19%
e356	Direct Access: ARCHER RAP	9	769.3	0.02%	769.3	0.02%	2,756.5	0.07%
e360	Direct Access: ARCHER RAP	225	5,655.3	0.15%	5,655.3	0.15%	5,217.1	0.14%
e370	Direct Access: ARCHER RAP	240	772.8	0.02%	772.8	0.02%	6,298.3	0.16%
e371	Direct Access: ARCHER RAP	29	1,364.9	0.04%	1,364.9	0.04%	12,049.5	0.32%
e372	Direct Access: ARCHER RAP	61	16,092.7	0.42%	16,092.7	0.42%	12,439.1	0.33%
e373	Direct Access: ARCHER RAP	140	4,060.8	0.11%	4,060.8	0.11%	9,080.4	0.24%
e392	Direct Access: ARCHER RAP	192	3,840.6	0.10%	3,982.3	0.10%	8,089.8	0.21%
e393	Direct Access: ARCHER RAP	0	0.0	0.00%	0.0	0.00%	3,644.5	0.10%
e394	Direct Access: ARCHER RAP	0	0.0	0.00%	0.0	0.00%	1,851.2	0.05%
e396	Direct Access: ARCHER RAP	4	0.0	0.00%	0.3	0.00%	2,838.3	0.07%

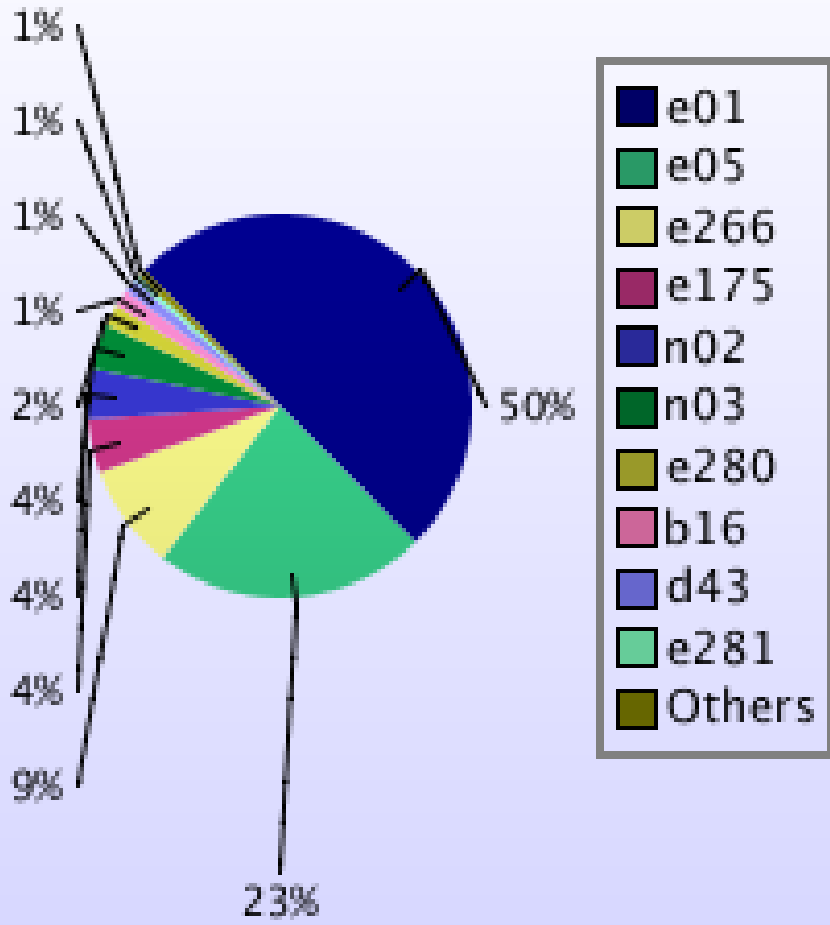
Project	Project Class	Number of Jobs	Charged kAUs	Charged Utilisation	Used kAUs	Utilisation	Allocated kAUs	Allocation
e397	Direct Access: ARCHER RAP	1	0.4	0.00%	0.4	0.00%	1,755.0	0.05%
e398	Direct Access: ARCHER RAP	0	0.0	0.00%	0.0	0.00%	2,524.3	0.07%
e399	Direct Access: ARCHER RAP	116	296.6	0.01%	296.6	0.01%	5,069.1	0.13%
e400	Direct Access: ARCHER RAP	0	0.0	0.00%	0.0	0.00%	2,385.4	0.06%
e402	Direct Access: ARCHER RAP	30	12.2	0.00%	12.2	0.00%	1,153.7	0.03%
e306	Instant Access	0	0.0	0.00%	0.0	0.00%	82.8	0.00%
e307	Instant Access	0	0.0	0.00%	0.0	0.00%	92.1	0.00%
e340	Instant Access	0	0.0	0.00%	0.0	0.00%	145.7	0.00%
e359	Instant Access	173	1,385.6	0.04%	1,385.6	0.04%	2,303.7	0.06%
e362	Instant Access	0	0.0	0.00%	0.0	0.00%	196.7	0.01%
e363	Instant Access	0	0.0	0.00%	0.0	0.00%	97.3	0.00%
e366	Instant Access	0	0.0	0.00%	0.0	0.00%	198.9	0.01%
e367	Instant Access	32	59.1	0.00%	59.1	0.00%	16.4	0.00%
e368	Instant Access	0	0.0	0.00%	0.0	0.00%	577.4	0.02%
e369	Instant Access	51	1,023.6	0.03%	1,023.6	0.03%	509.2	0.01%
e374	Instant Access	202	15,885.7	0.42%	15,885.7	0.42%	8,572.2	0.22%
e376	Instant Access	111	191.0	0.00%	191.0	0.00%	6,510.5	0.17%
e379	Instant Access	0	0.0	0.00%	0.0	0.00%	593.3	0.02%
e380	Instant Access	27	0.5	0.00%	0.5	0.00%	401.1	0.01%
e381	Instant Access	12	116.3	0.00%	116.3	0.00%	593.3	0.02%
e383	Instant Access	2	19.4	0.00%	19.4	0.00%	462.8	0.01%
e384	Instant Access	0	0.0	0.00%	0.0	0.00%	391.0	0.01%
e386	Instant Access	0	0.0	0.00%	0.0	0.00%	201.9	0.01%
e387	Instant Access	0	0.0	0.00%	0.0	0.00%	291.5	0.01%
e388	Instant Access	0	0.0	0.00%	0.0	0.00%	370.0	0.01%
e389	Instant Access	45	2.6	0.00%	3.0	0.00%	384.3	0.01%
e390	Instant Access	138	116.5	0.00%	116.5	0.00%	369.0	0.01%
e391	Instant Access	108	117.6	0.00%	117.6	0.00%	369.0	0.01%
e395	Instant Access	0	0.0	0.00%	0.0	0.00%	191.9	0.01%
e401	Instant Access	9	0.7	0.00%	0.7	0.00%	2,385.3	0.06%
e404	Instant Access	0	0.0	0.00%	0.0	0.00%	97.6	0.00%
e406	Instant Access	0	0.0	0.00%	0.0	0.00%	31.7	0.00%
r10	RDF: Pilot	0	0.0	0.00%	0.0	0.00%	8.2	0.00%
i07	Industrial	417	83,167.3	2.17%	83,167.3	2.17%	39,969.9	1.05%
e382	Service	1,202	4,406.4	0.12%	4,406.4	0.12%	7,333.6	0.19%
EPSRC Total		113,121	2,443,697.7	63.90%	2,544,921.3	66.55%	1,767,208.6	46.21%
n01	Consortia	8,382	144,364.2	3.78%	144,558.9	3.78%	206,676.4	5.40%
n02	Consortia	26,654	315,751.5	8.26%	319,985.0	8.37%	312,462.9	8.17%
n03	Consortia	6,620	125,572.4	3.28%	129,878.1	3.40%	157,597.9	4.12%
NERC Total		41,656	585,688.2	15.32%	594,422.0	15.54%	676,737.2	17.70%
b14	Class1a	0	0.0	0.00%	0.0	0.00%	803.5	0.02%
b16	Class1a	57	1,353.4	0.04%	3,038.8	0.08%	1,232.3	0.03%
e329	Class1a	0	0.0	0.00%	0.0	0.00%	1,101.6	0.03%
BBSRC Total		57	1,353.4	0.04%	3,038.8	0.08%	3,137.3	0.08%
pr1u0905	DECI: EXEC	0	0.0	0.00%	0.0	0.00%	142.8	0.00%
pr1u1103	DECI: EXEC	75	6,209.3	0.16%	6,209.3	0.16%	6,757.0	0.18%
pr1u1105	DECI: EXEC	0	0.0	0.00%	0.0	0.00%	7,976.6	0.21%
pr1u1109	DECI: EXEC	0	0.0	0.00%	0.0	0.00%	7,418.7	0.19%
pr1u1110	DECI: EXEC	0	0.0	0.00%	0.0	0.00%	4,237.1	0.11%
pr1u1111	DECI: EXEC	58	2,807.5	0.07%	2,807.5	0.07%	1,440.7	0.04%
pr1u1112	DECI: EXEC	0	0.0	0.00%	0.0	0.00%	6,355.6	0.17%
pr1u1113	DECI: EXEC	34	5,792.8	0.15%	5,792.8	0.15%	10,834.7	0.28%
pr1u1114	DECI: EXEC	73	1,541.9	0.04%	1,545.9	0.04%	629.6	0.02%
pr1u1115	DECI: EXEC	498	3,070.0	0.08%	3,070.0	0.08%	3,656.6	0.10%
pr1u1202	DECI: EXEC	364	17,693.0	0.46%	17,693.0	0.46%	15,784.0	0.41%
pr1u1204	DECI: EXEC	0	0.0	0.00%	0.0	0.00%	8,255.6	0.22%
pr1u1205	DECI: EXEC	14	10.2	0.00%	10.2	0.00%	4,653.0	0.12%
pr1u1211	DECI: EXEC	466	11,163.1	0.29%	11,163.1	0.29%	6,433.2	0.17%

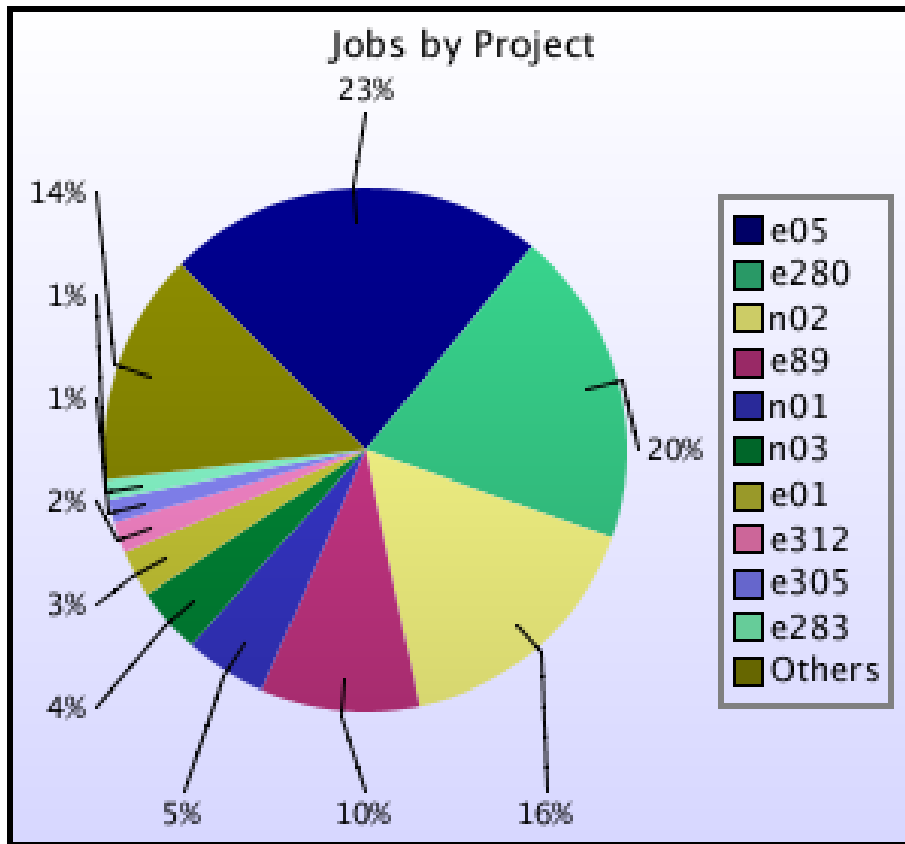
Project	Project Class	Number of Jobs	Charged kAUs	Charged Utilisation	Used kAUs	Utilisation	Allocated kAUs	Allocation
pr1u1212	DECI: EXEC	41	841.4	0.02%	841.4	0.02%	5,866.8	0.15%
pr1u1213	DECI: EXEC	49	10,552.4	0.28%	10,552.4	0.28%	3,674.4	0.10%
pr1u1214	DECI: EXEC	15	371.6	0.01%	371.6	0.01%	1,344.9	0.04%
pr1u1215	DECI: EXEC	0	0.0	0.00%	0.0	0.00%	4,400.1	0.12%
pr1u1101	DECI: HOME	0	0.0	0.00%	0.0	0.00%	0.1	0.00%
pr1u1104	DECI: HOME	0	0.0	0.00%	0.0	0.00%	0.1	0.00%
pr1u1106	DECI: HOME	0	0.0	0.00%	0.0	0.00%	0.1	0.00%
pr1u1108	DECI: HOME	0	0.0	0.00%	0.0	0.00%	0.1	0.00%
pr1u1201	DECI: HOME	0	0.0	0.00%	0.0	0.00%	0.2	0.00%
pr1u1203	DECI: HOME	0	0.0	0.00%	0.0	0.00%	0.2	0.00%
pr1u1206	DECI: HOME	0	0.0	0.00%	0.0	0.00%	0.2	0.00%
pr1u1207	DECI: HOME	0	0.0	0.00%	0.0	0.00%	414.6	0.01%
pr1u1208	DECI: HOME	2	1.5	0.00%	1.5	0.00%	0.2	0.00%
pr1u1209	DECI: HOME	0	0.0	0.00%	0.0	0.00%	0.2	0.00%
pr1u1210	DECI: HOME	0	0.0	0.00%	0.0	0.00%	0.2	0.00%
PRACE Total		1,689	60,054.7	1.57%	60,058.8	1.57%	100,277.5	2.62%
ecse0101	eCSE	0	0.0	0.00%	0.0	0.00%	143.2	0.00%
ecse0102	eCSE	0	0.0	0.00%	0.0	0.00%	72.6	0.00%
ecse0103	eCSE	0	0.0	0.00%	0.0	0.00%	135.6	0.00%
ecse0105	eCSE	0	0.0	0.00%	0.0	0.00%	78.0	0.00%
ecse0108	eCSE	20	22.8	0.00%	22.8	0.00%	97.1	0.00%
ecse0110	eCSE	0	0.0	0.00%	0.0	0.00%	143.2	0.00%
ecse0113	eCSE	37	105.9	0.00%	105.9	0.00%	179.9	0.00%
ecse0115	eCSE	64	17.1	0.00%	17.1	0.00%	170.4	0.00%
ecse0116	eCSE	0	0.0	0.00%	0.0	0.00%	238.8	0.01%
ecse0117	eCSE	0	0.0	0.00%	0.0	0.00%	171.3	0.00%
ecse0118	eCSE	192	66.4	0.00%	66.4	0.00%	189.4	0.00%
ecse0119	eCSE	0	0.0	0.00%	0.0	0.00%	20.8	0.00%
ecse0202	eCSE	23	1.3	0.00%	1.6	0.00%	147.9	0.00%
ecse0203	eCSE	0	0.0	0.00%	0.0	0.00%	134.3	0.00%
ecse0206	eCSE	15	0.6	0.00%	0.6	0.00%	123.4	0.00%
ecse0208	eCSE	0	0.0	0.00%	0.0	0.00%	132.9	0.00%
ecse0209	eCSE	0	0.0	0.00%	0.0	0.00%	121.6	0.00%
ecse0211	eCSE	0	0.0	0.00%	0.0	0.00%	45.8	0.00%
ecse0213	eCSE	1	0.1	0.00%	0.1	0.00%	168.1	0.00%
ecse0215	eCSE	0	0.0	0.00%	0.0	0.00%	113.9	0.00%
ecse0217	eCSE	1	1.0	0.00%	1.0	0.00%	110.9	0.00%
ecse0301	eCSE	15	4.2	0.00%	4.2	0.00%	75.1	0.00%
ecse0302	eCSE	0	0.0	0.00%	0.0	0.00%	6.7	0.00%
ecse0303	eCSE	11	11.3	0.00%	11.3	0.00%	73.1	0.00%
ecse0307	eCSE	0	0.0	0.00%	0.0	0.00%	47.4	0.00%
ecse0308	eCSE	0	0.0	0.00%	0.0	0.00%	55.0	0.00%
ecse0309	eCSE	0	0.0	0.00%	0.0	0.00%	182.0	0.00%
ecse0310	eCSE	0	0.0	0.00%	0.0	0.00%	6.2	0.00%
ecse0313	eCSE	0	0.0	0.00%	0.0	0.00%	26.7	0.00%
ecsepr01	eCSE	0	0.0	0.00%	0.0	0.00%	243.1	0.01%
ecsepr02	eCSE	21	52.8	0.00%	52.9	0.00%	244.5	0.01%
ecsepr03	eCSE	0	0.0	0.00%	0.0	0.00%	243.1	0.01%
ecsepr04	eCSE	0	0.0	0.00%	0.0	0.00%	243.1	0.01%
ecsepr05	eCSE	0	0.0	0.00%	0.0	0.00%	243.1	0.01%
ecsepr06	eCSE	0	0.0	0.00%	0.0	0.00%	243.1	0.01%
ecsepr07	eCSE	27	175.4	0.00%	175.4	0.00%	243.1	0.01%
ecsepr08	eCSE	0	0.0	0.00%	0.0	0.00%	243.1	0.01%
ecsepr09	eCSE	0	0.0	0.00%	0.0	0.00%	245.1	0.01%
ecsepr10	eCSE	0	0.0	0.00%	0.0	0.00%	243.1	0.01%
ecsepr11	eCSE	0	0.0	0.00%	0.0	0.00%	245.1	0.01%
ecsepr12	eCSE	0	0.0	0.00%	0.0	0.00%	245.1	0.01%
ecsepr13	eCSE	0	0.0	0.00%	0.0	0.00%	243.1	0.01%
ecsepr14	eCSE	0	0.0	0.00%	0.0	0.00%	245.1	0.01%
ecsepr15	eCSE	0	0.0	0.00%	0.0	0.00%	243.1	0.01%
ecsepr16	eCSE	0	0.0	0.00%	0.0	0.00%	81.4	0.00%
ecseta01	eCSE	0	0.0	0.00%	0.0	0.00%	243.1	0.01%
ecseta02	eCSE	0	0.0	0.00%	0.0	0.00%	245.1	0.01%

Project	Project Class	Number of Jobs	Charged kAUs	Charged Utilisation	Used kAUs	Utilisation	Allocated kAUs	Allocation
ecseta03	eCSE	0	0.0	0.00%	0.0	0.00%	254.1	0.01%
eCSE Total		427	458.9	0.01%	459.2	0.01%	7,691.3	0.20%
d43	ECDF	490	8,676.8	0.23%	9,899.7	0.26%	30,442.8	0.80%
d25	Research	42	299.9	0.01%	300.0	0.01%	3,936.9	0.10%
d35	Research	657	1,186.2	0.03%	1,186.2	0.03%	654.4	0.02%
d37	Research	74	2.4	0.00%	2.4	0.00%	3,250.5	0.09%
d41	Research	0	0.0	0.00%	0.0	0.00%	1,251.3	0.03%
d56	Research	818	3,375.5	0.09%	3,375.5	0.09%	9,935.5	0.26%
d57	Research	0	0.0	0.00%	0.0	0.00%	95.6	0.00%
d60	Research	10	1.3	0.00%	1.3	0.00%	160.1	0.00%
d61	Research	0	0.0	0.00%	0.0	0.00%	164.8	0.00%
d62	Research	84	1.6	0.00%	1.6	0.00%	853.6	0.02%
d63	Research	0	0.0	0.00%	0.0	0.00%	923.6	0.02%
d64	Research	0	0.0	0.00%	0.0	0.00%	692.7	0.02%
d65	Research	4	0.1	0.00%	0.1	0.00%	18,471.9	0.48%
d66	Research	0	0.0	0.00%	0.0	0.00%	2.0	0.00%
d67	Research	44	115.6	0.00%	115.6	0.00%	313.8	0.01%
d69	Research	0	0.0	0.00%	0.0	0.00%	484.8	0.01%
d70	Research	162	9.7	0.00%	9.7	0.00%	211.3	0.01%
d71	Research	52	1,194.0	0.03%	1,194.0	0.03%	4,005.0	0.10%
d72	Research	18	38.3	0.00%	38.3	0.00%	1,814.0	0.05%
d73	Research	0	0.0	0.00%	0.0	0.00%	28,837.9	0.75%
d75	Research	12	26.3	0.00%	26.3	0.00%	139.8	0.00%
d76	Research	0	0.0	0.00%	0.0	0.00%	112.1	0.00%
e324	Research	7	15.4	0.00%	15.4	0.00%	1,684.7	0.04%
i01	Industrial	14	89.2	0.00%	89.2	0.00%	107.9	0.00%
i02	Industrial	0	0.0	0.00%	0.0	0.00%	1.9	0.00%
i03	Industrial	0	0.0	0.00%	0.0	0.00%	5,353.8	0.14%
i04	Industrial	0	0.0	0.00%	0.0	0.00%	67.8	0.00%
i06	Industrial	0	0.0	0.00%	0.0	0.00%	135.7	0.00%
i10	Industrial	0	0.0	0.00%	0.0	0.00%	128.2	0.00%
i13	Industrial	0	0.0	0.00%	0.0	0.00%	4.9	0.00%
i15	Industrial	22	6.2	0.00%	6.2	0.00%	591.8	0.02%
i16	Industrial	41	22.6	0.00%	22.8	0.00%	47.4	0.00%
i17	Industrial	10	0.0	0.00%	0.0	0.00%	7.8	0.00%
x06	Industrial	43	0.6	0.00%	0.6	0.00%	4.6	0.00%
x08	Industrial	40	145.4	0.00%	145.4	0.00%	171.9	0.00%
d59	Training	598	395.3	0.01%	395.3	0.01%	955.0	0.02%
d68	Training	106	163.0	0.00%	157.3	0.00%	1,235.7	0.03%
d74	Training	961	70.3	0.00%	70.3	0.00%	204.8	0.01%
d39	Service	0	0.0	0.00%	0.0	0.00%	227.6	0.01%
i14	Service	0	0.0	0.00%	0.0	0.00%	1,216.7	0.03%
y01	Service	0	0.0	0.00%	0.0	0.00%	217.8	0.01%
y02	Service	45	1.7	0.00%	1.7	0.00%	1,517.1	0.04%
y07	Service	9	2.9	0.00%	2.9	0.00%	141.0	0.00%
z02	Service	25	1.8	0.00%	1.8	0.00%	453.4	0.01%
z99	Service	82	1.5	0.00%	1.5	0.00%	17.7	0.00%
DirectorsTime Total		4,470	15,843.8	0.41%	17,061.2	0.45%	121,249.7	3.17%
y14	Training	950	445.1	0.01%	300.3	0.01%	687.8	0.02%
z01	Service	945	9,739.5	0.25%	9,737.1	0.25%	21,220.8	0.55%
CSE Total		1,895	10,184.5	0.27%	10,037.5	0.26%	21,908.5	0.57%
w01	Service	0	0.0	0.00%	0.0	0.00%	497.1	0.01%
w02	Service	71	303.8	0.01%	303.8	0.01%	497.1	0.01%
w03	Service	60	386.0	0.01%	386.0	0.01%	473.6	0.01%
w04	Service	0	0.0	0.00%	0.0	0.00%	497.1	0.01%
w05	Service	107	30.9	0.00%	30.9	0.00%	497.1	0.01%
y21	Service	1	0.0	0.00%	0.0	0.00%	497.1	0.01%
Internal Total		239	720.7	0.02%	720.7	0.02%	2,959.2	0.08%
Total		163,554	3,118,001.9	81.54%	3,230,719.4	84.48%	2,701,169.4	70.64%



Uncharged Use by Project

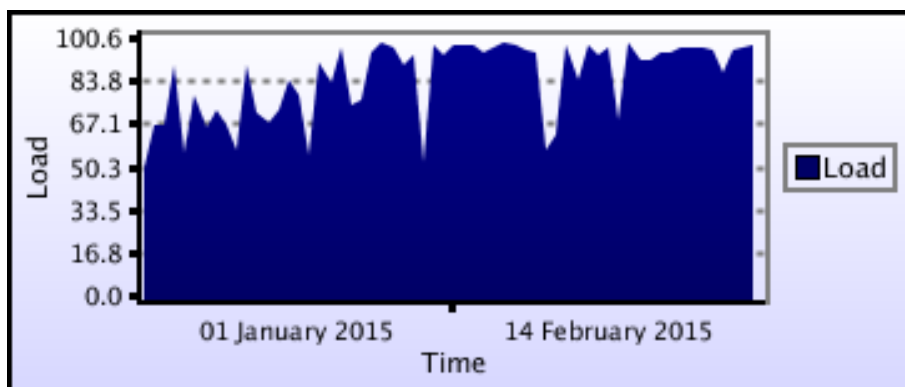




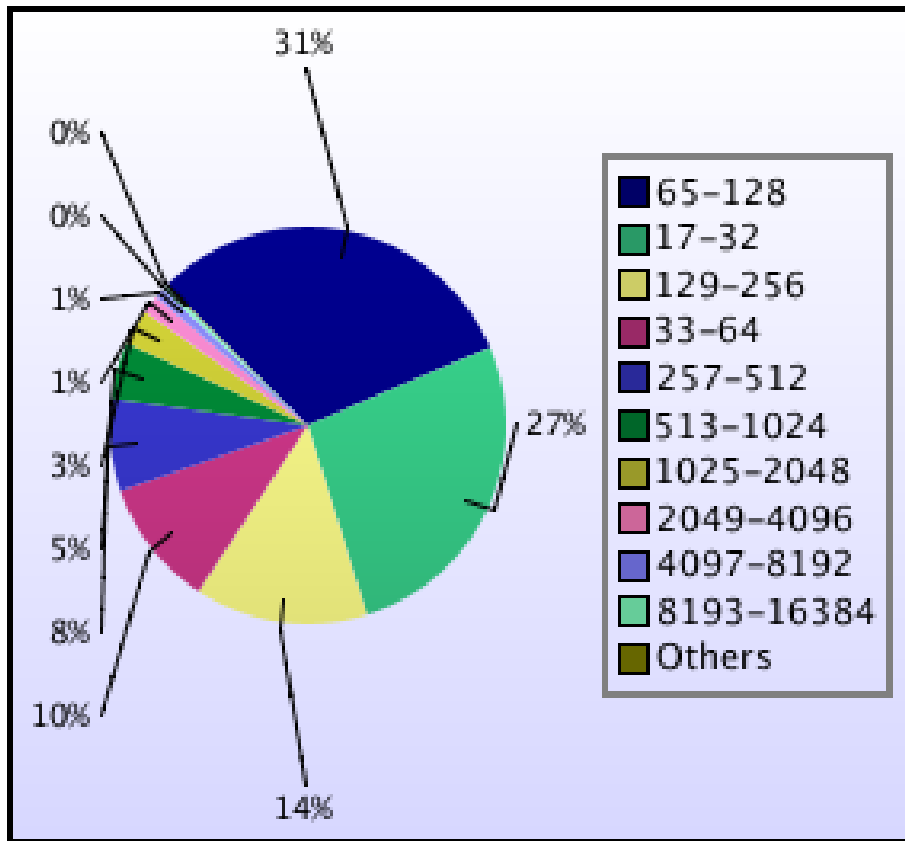
kAUs (by Size)

Size	kAUs	Number of Jobs
17-32	26,618.974	43,448
33-64	42,081.592	16,949
65-128	153,125.057	50,794
129-256	274,383.033	23,158
257-512	409,428.832	12,287
513-1024	431,646.275	7,525
1025-2048	368,273.298	4,777
2049-4096	407,233.6	2,440
4097-8192	525,261.915	1,380
8193-16384	211,156.794	621
16385-32768	194,262.029	120
32769-65536	71,257.135	30
65537-131072	1,107.968	1

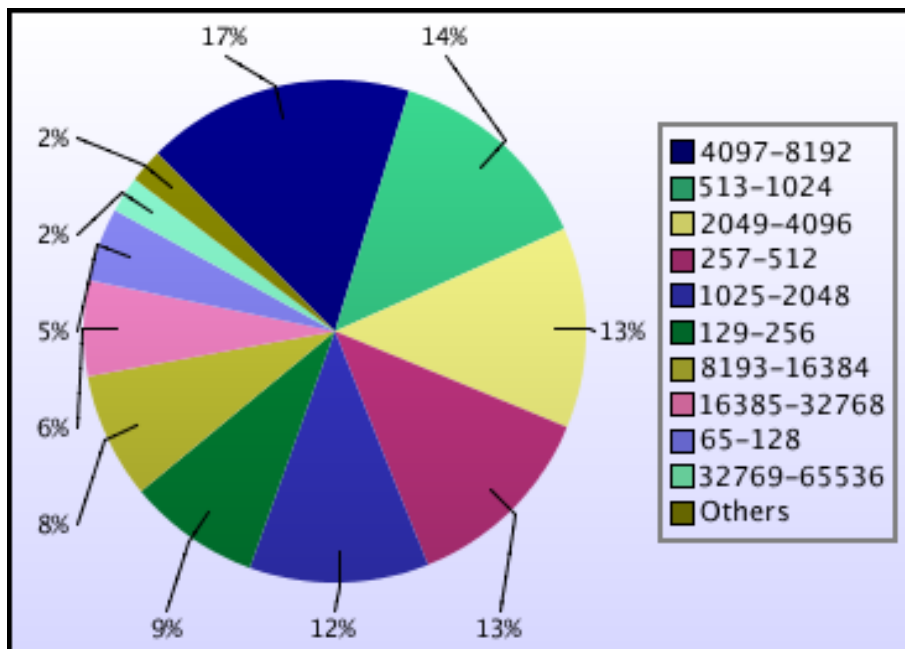
Load plots



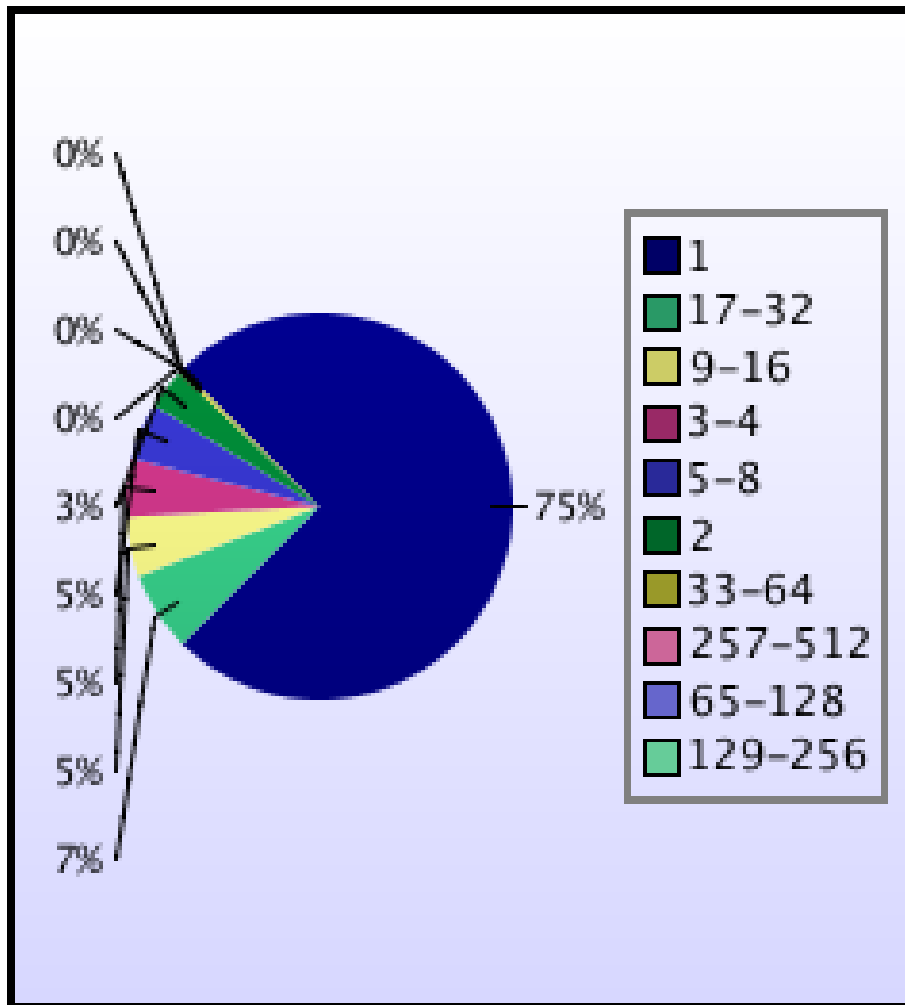
Percentage load on machine



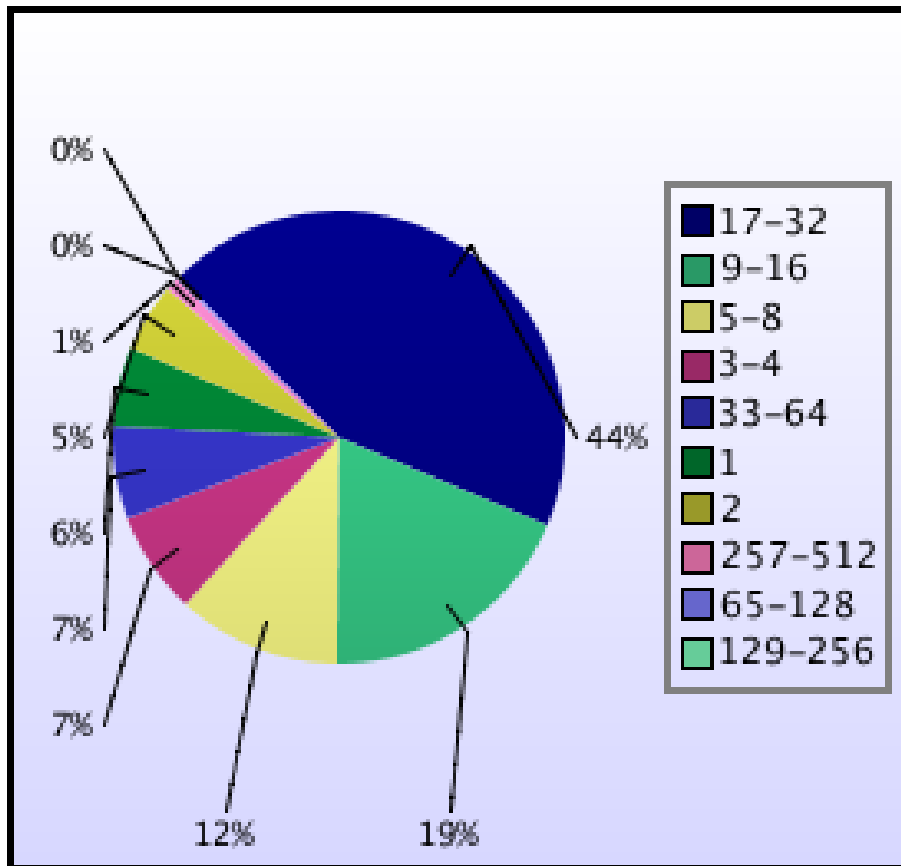
Jobs by Size



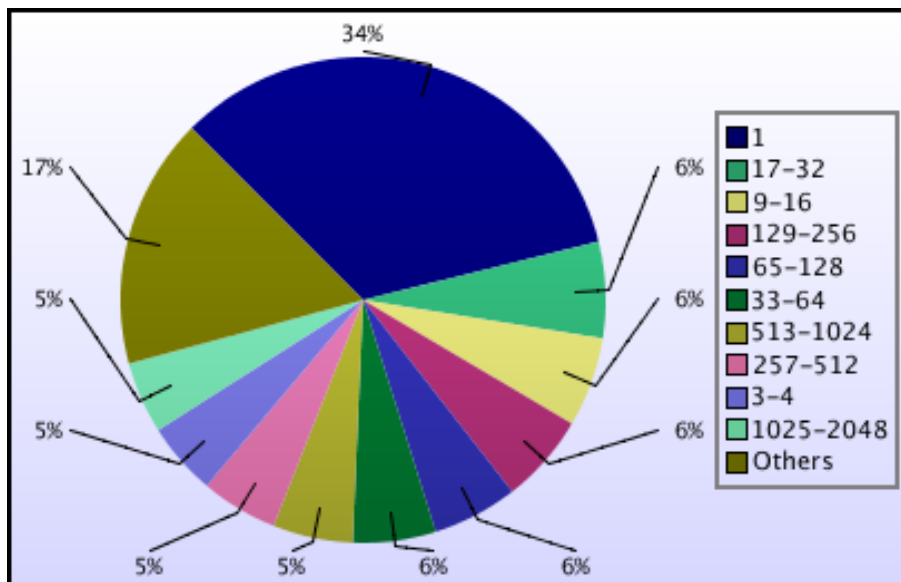
kAUs used by Size



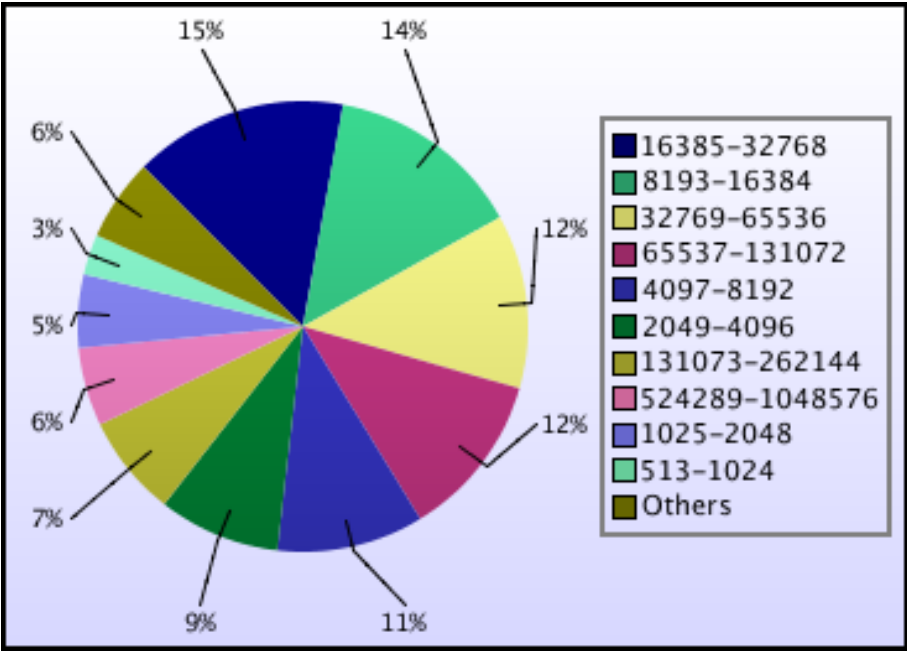
Jobs grouped by wall-clock-hours



kAUs used grouped by wall-clock-hours



Jobs grouped by core-hours

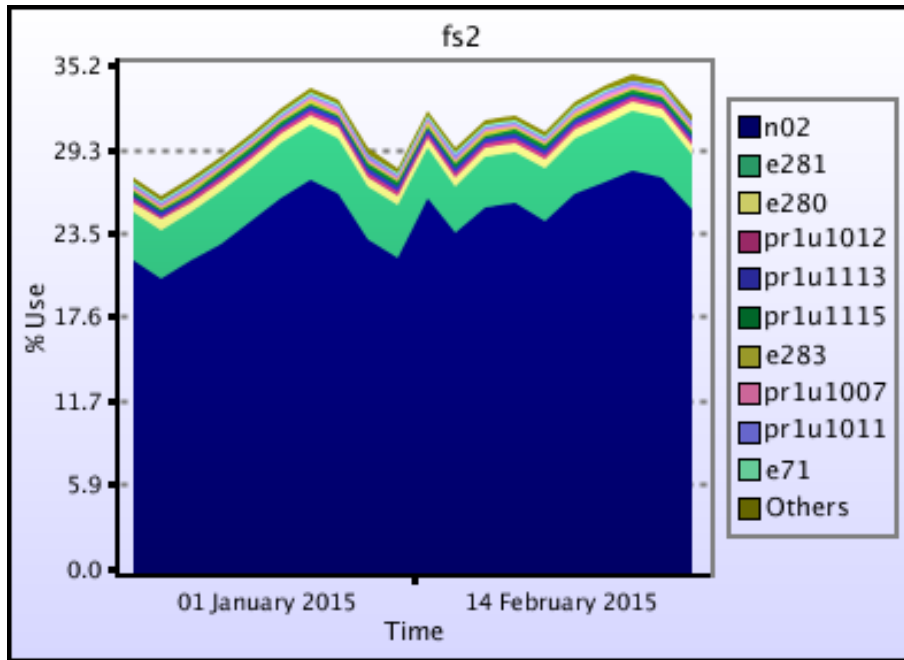


kAUs used grouped by core-hours

Disk usage

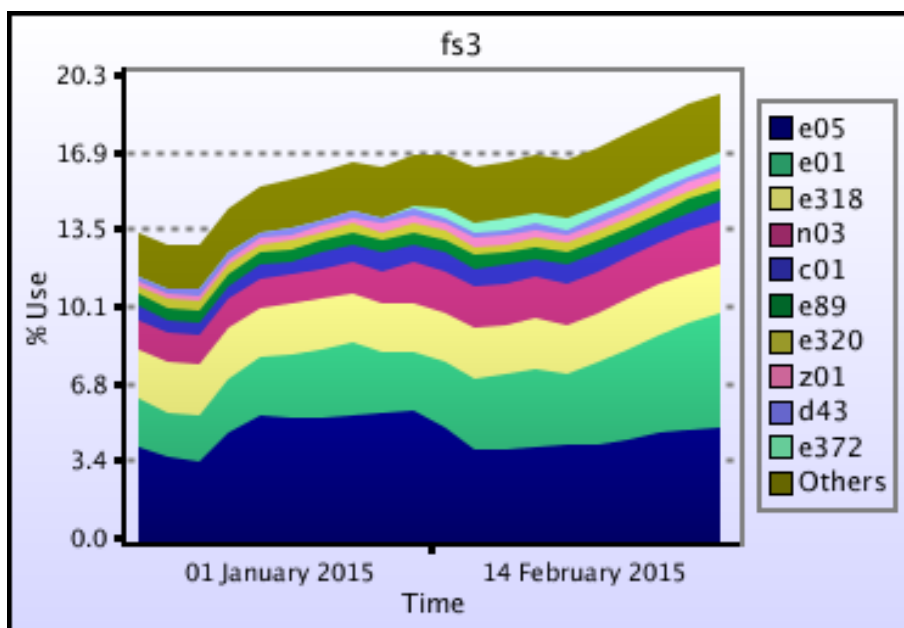
Disk usage for work (fs2)

This is a plot of Disk Use on fs2 against time. The plot is divided into a number of classes according to Project. This is a stacked plot so the top of the plot represents the total usage at a given time.



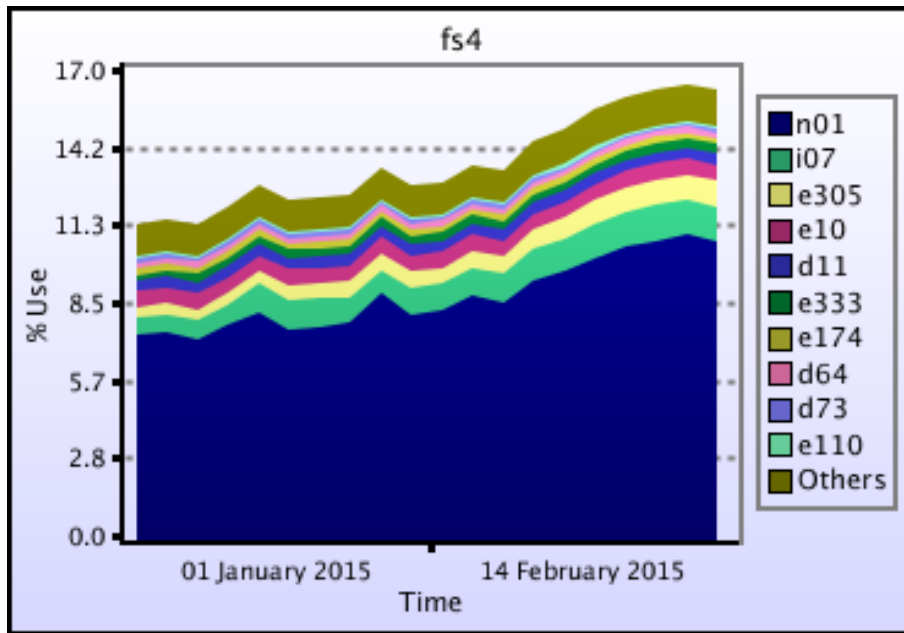
Disk usage for work (fs3)

This is a plot of Disk Use on fs3 against time. The plot is divided into a number of classes according to Project. This is a stacked plot so the top of the plot represents the total usage at a given time.



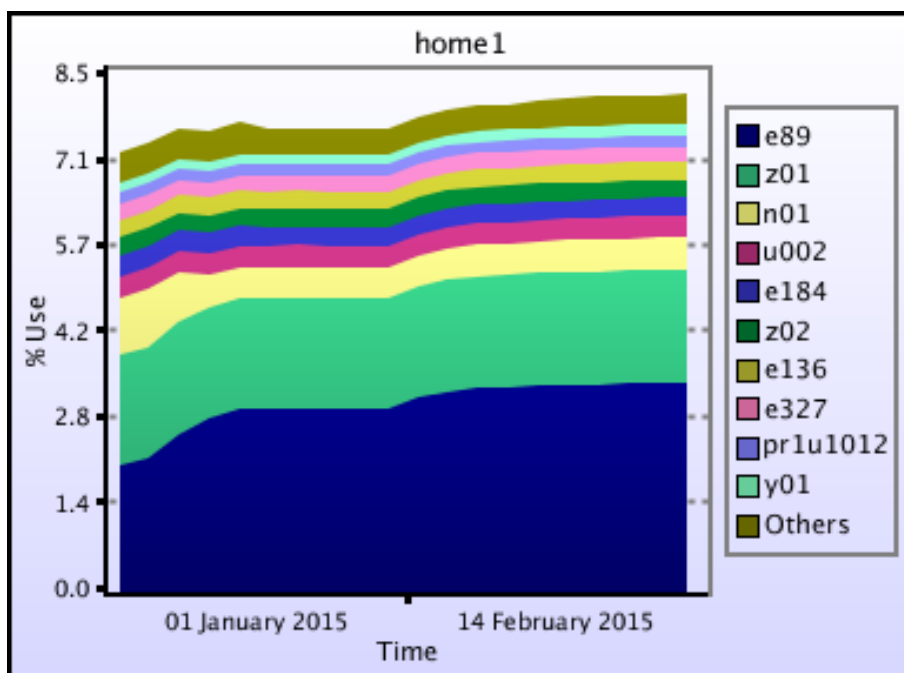
Disk usage for work (fs4)

This is a plot of Disk Use on fs4 against time. The plot is divided into a number of classes according to Project. This is a stacked plot so the top of the plot represents the total usage at a given time.



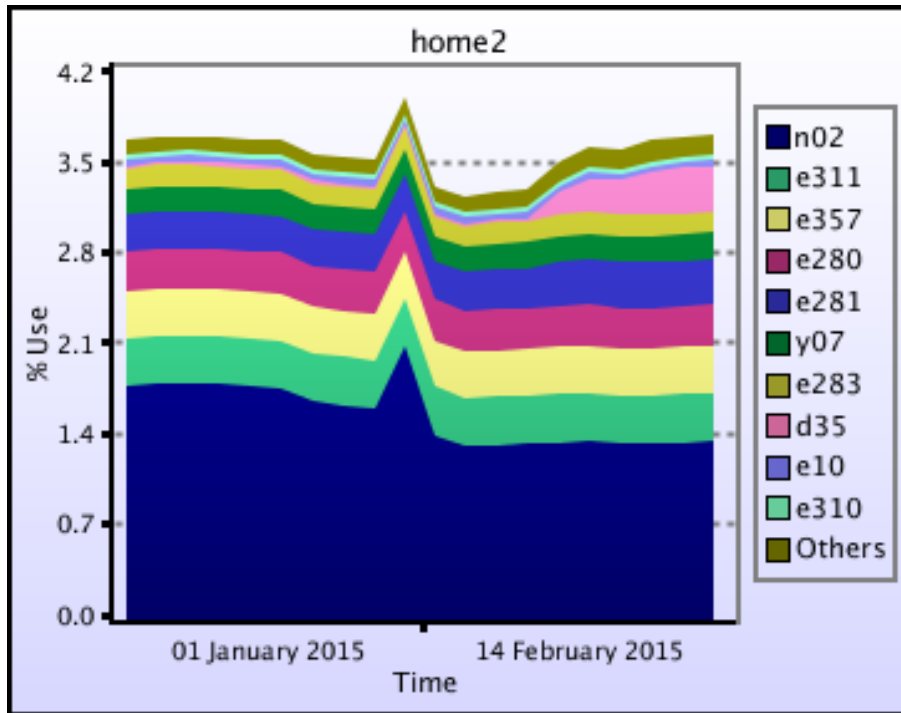
Disk usage for home (home1)

This is a plot of Disk Use on home1 against time. The plot is divided into a number of classes according to Project. This is a stacked plot so the top of the plot represents the total usage at a given time.



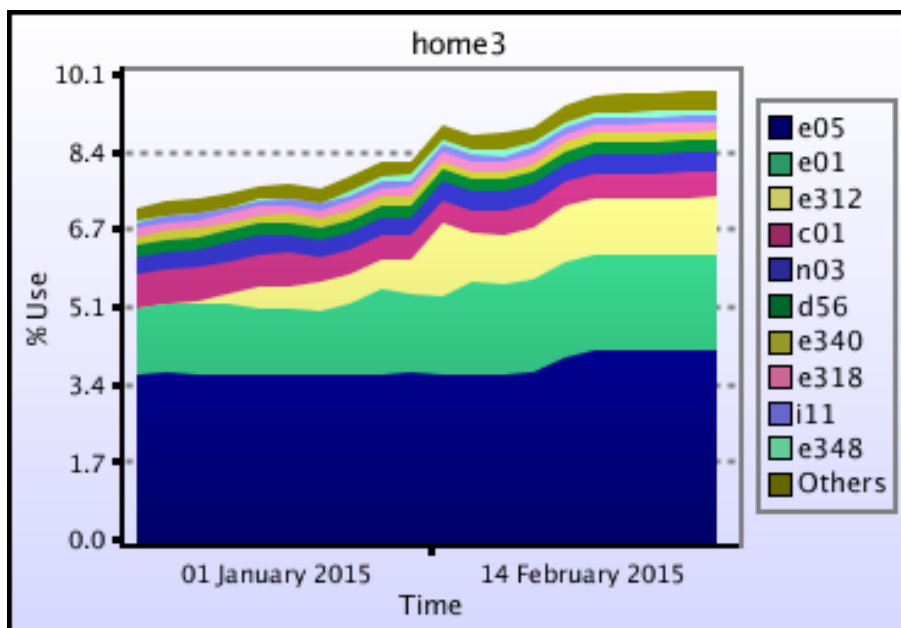
Disk usage for home (home2)

This is a plot of Disk Use on home2 against time. The plot is divided into a number of classes according to Project. This is a stacked plot so the top of the plot represents the total usage at a given time.



Disk usage for home (home3)

This is a plot of Disk Use on home3 against time. The plot is divided into a number of classes according to Project. This is a stacked plot so the top of the plot represents the total usage at a given time.



Disk usage for home (home4)

This is a plot of Disk Use on home4 against time. The plot is divided into a number of classes according to Project. This is a stacked plot so the top of the plot represents the total usage at a given time.

